

Major Pentatonic Scales

Major Scales

Violin Scales

Arr:HMM

C Major



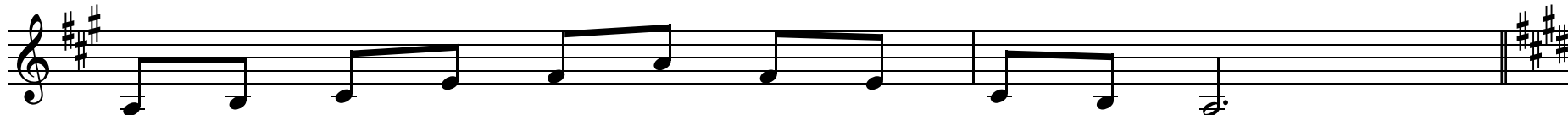
3 G Major Pentatonic



5 D Major Pentatonic



7 A Major Pentatonic



9 E Major Pentatonic



11 B Major Pentatonic



13

F# Major Pentatonic

2

Musical notation for the F# Major Pentatonic scale, starting on F#4 and ending on F#5. The scale consists of the notes F#, G#, A, B, and C#. The notation is written on a single staff in treble clef, showing the ascending and descending sequences of notes.

15

Gb Major Pentatonic

Musical notation for the Gb Major Pentatonic scale, starting on Gb4 and ending on Gb5. The scale consists of the notes Gb, Ab, Bb, C, and D. The notation is written on a single staff in treble clef, showing the ascending and descending sequences of notes.

17

Db Major Pentatonic

Musical notation for the Db Major Pentatonic scale, starting on Db4 and ending on Db5. The scale consists of the notes Db, Eb, F, G, and Ab. The notation is written on a single staff in treble clef, showing the ascending and descending sequences of notes.

19

Ab Major Pentatonic

Musical notation for the Ab Major Pentatonic scale, starting on Ab4 and ending on Ab5. The scale consists of the notes Ab, Bb, C, D, and Eb. The notation is written on a single staff in treble clef, showing the ascending and descending sequences of notes.

21

Eb Major Pentatonic

Musical notation for the Eb Major Pentatonic scale, starting on Eb4 and ending on Eb5. The scale consists of the notes Eb, F, G, Ab, and Bb. The notation is written on a single staff in treble clef, showing the ascending and descending sequences of notes.

23

Bb Major Pentatonic

Musical notation for the Bb Major Pentatonic scale, starting on Bb4 and ending on Bb5. The scale consists of the notes Bb, C, D, Eb, and F. The notation is written on a single staff in treble clef, showing the ascending and descending sequences of notes.

25

F Major Pentatonic

Musical notation for the F Major Pentatonic scale, starting on F4 and ending on F5. The scale consists of the notes F, G, A, B, and C. The notation is written on a single staff in treble clef, showing the ascending and descending sequences of notes.