

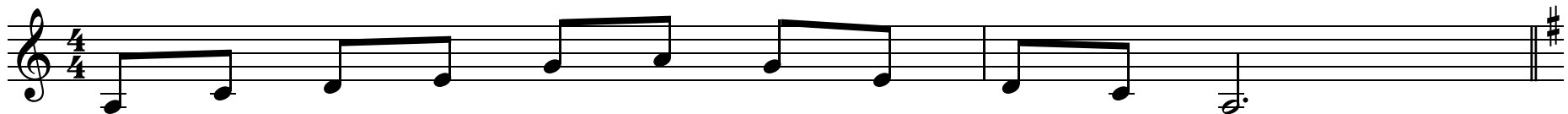
One Octave Minor Pentatonic Scales

All Keys

Minor Scales

Arr:HMM

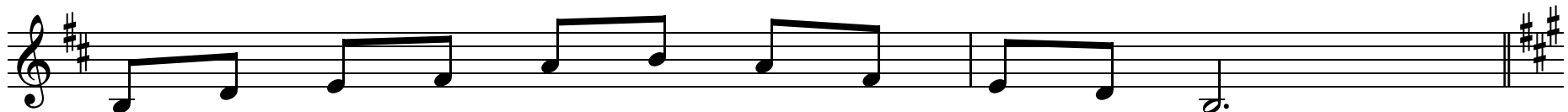
A Pentatonic



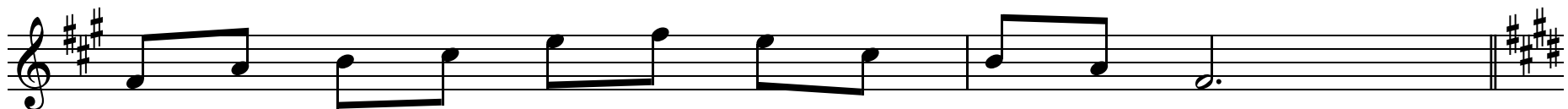
E Pentatonic



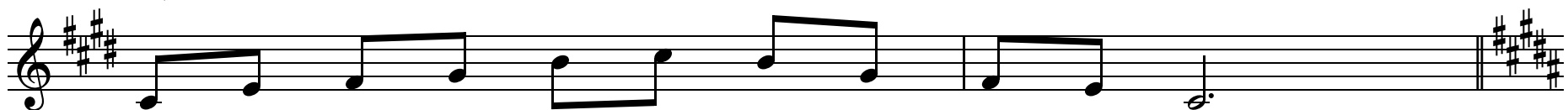
B Pentatonic



F Pentatonic



C# Pentatonic



G # Pentatonic

Musical notation for the G# Pentatonic scale. The scale is written on a single staff in treble clef with a key signature of three sharps (F#, C#, G#). The notes are G#2, A3, B3, C#4, D#4, and E4. The notation consists of a sequence of eighth notes: G#2, A3, B3, C#4, D#4, E4. The piece concludes with a double bar line and a key signature change to three sharps (F#, C#, G#).

D # Pentatonic

Musical notation for the D# Pentatonic scale. The scale is written on a single staff in treble clef with a key signature of three sharps (F#, C#, G#). The notes are D#3, E3, F#3, G#3, and A3. The notation consists of a sequence of eighth notes: D#3, E3, F#3, G#3, A3. The piece concludes with a double bar line and a key signature change to three flats (Bb, Eb, Ab).

E b Pentatonic

Musical notation for the Eb Pentatonic scale. The scale is written on a single staff in treble clef with a key signature of three flats (Bb, Eb, Ab). The notes are Eb3, F3, G3, Ab3, and Bb3. The notation consists of a sequence of eighth notes: Eb3, F3, G3, Ab3, Bb3. The piece concludes with a double bar line and a key signature change to three flats (Bb, Eb, Ab).

B b Pentatonic

Musical notation for the Bb Pentatonic scale. The scale is written on a single staff in treble clef with a key signature of three flats (Bb, Eb, Ab). The notes are Bb2, C3, D3, Eb3, and F3. The notation consists of a sequence of eighth notes: Bb2, C3, D3, Eb3, F3. The piece concludes with a double bar line and a key signature change to three flats (Bb, Eb, Ab).

F Pentatonic

Musical notation for the F Pentatonic scale. The scale is written on a single staff in treble clef with a key signature of three flats (Bb, Eb, Ab). The notes are F2, G2, Ab2, Bb2, and C3. The notation consists of a sequence of eighth notes: F2, G2, Ab2, Bb2, C3. The piece concludes with a double bar line and a key signature change to three flats (Bb, Eb, Ab).

C Pentatonic

Musical notation for the C Pentatonic scale. The scale is written on a single staff in treble clef with a key signature of three flats (Bb, Eb, Ab). The notes are C2, D2, Eb2, F2, and G2. The notation consists of a sequence of eighth notes: C2, D2, Eb2, F2, G2. The piece concludes with a double bar line and a key signature change to three flats (Bb, Eb, Ab).

G Pentatonic



Pentatonic

